

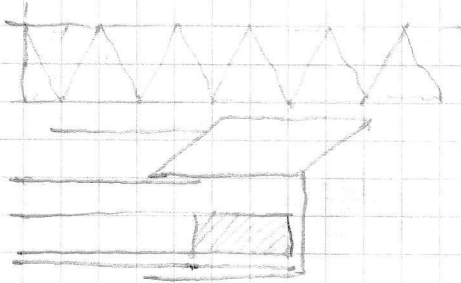
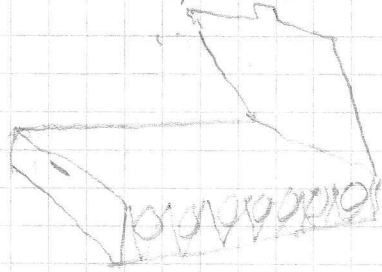
26 Apr 2012

From pack to 10 cigarettes, because 20 is too difficult

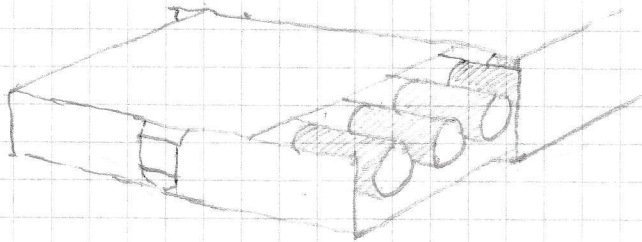
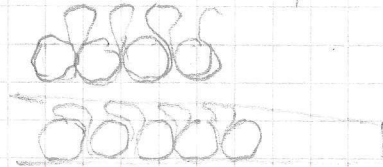


Wedge them in?

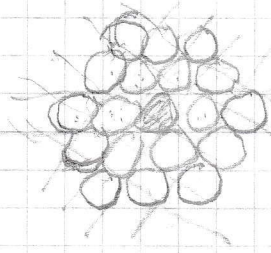
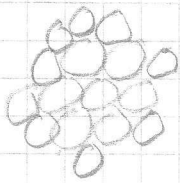
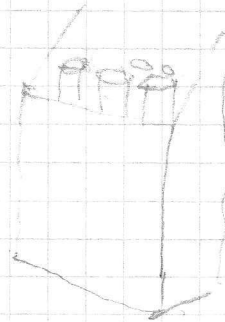
or



← Squashed down?



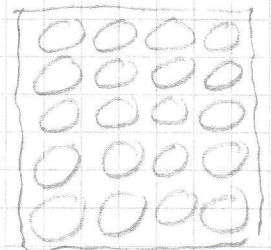
Or for a simple box with cigarette loose inside



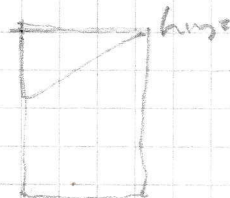
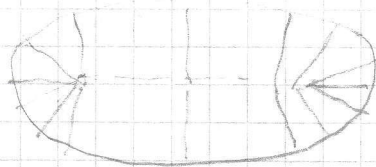
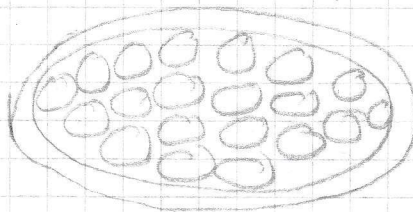
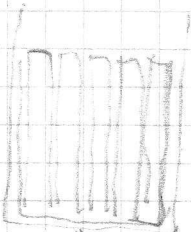
3
4
5
4
3
—
19

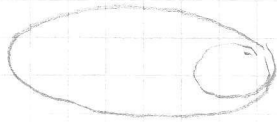
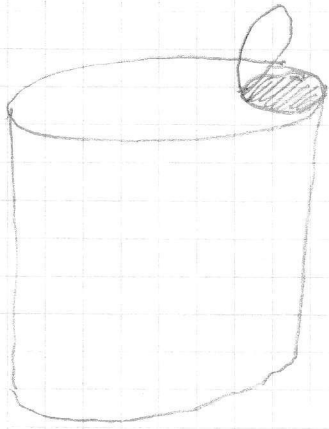
7
6
7

32

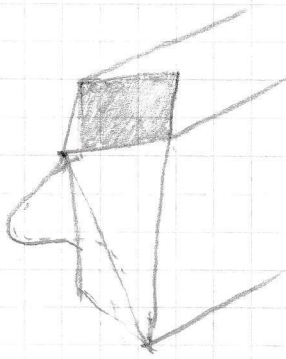


40

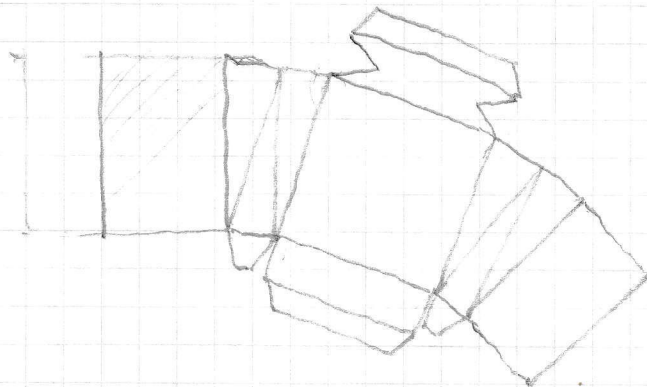
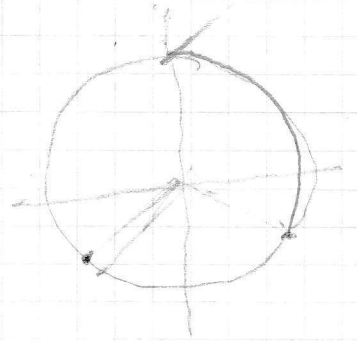
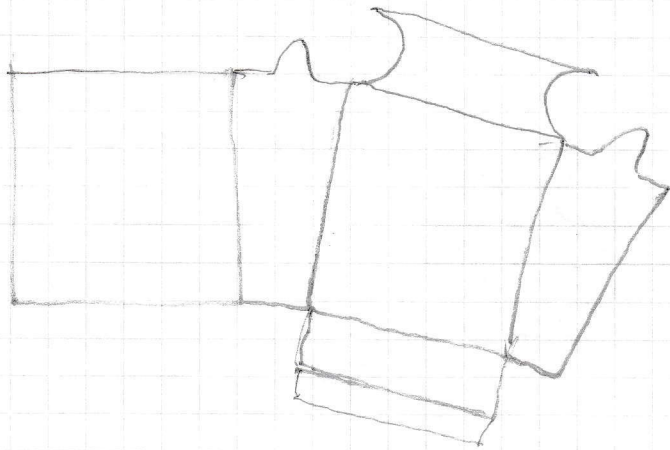
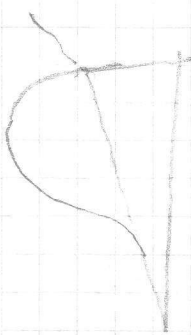
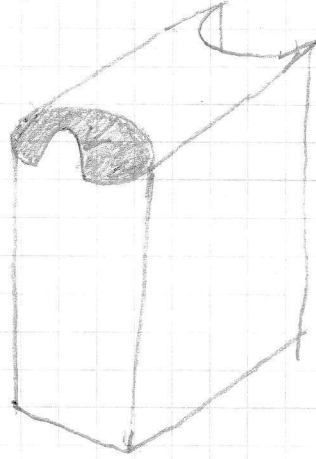




G



or

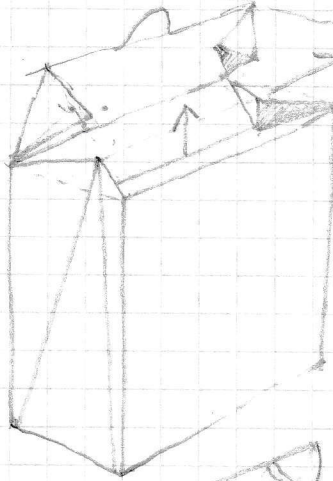
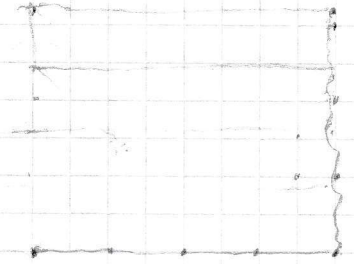
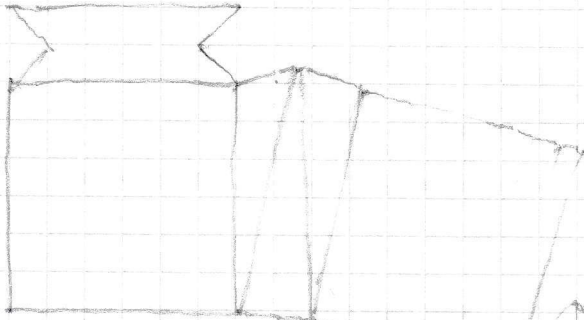


(5 pm 20 April - 2 am 27 April 2012) 6375 days.

3-5 legs

$$\frac{9}{24} = \frac{3}{8}$$

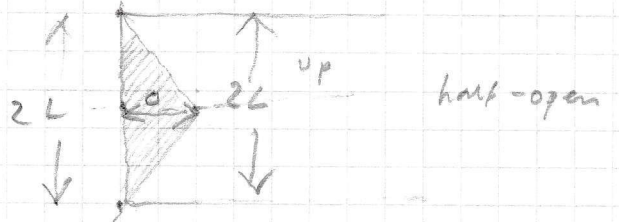
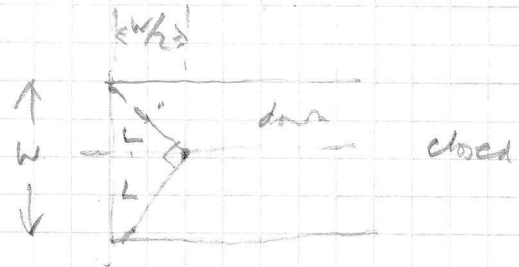
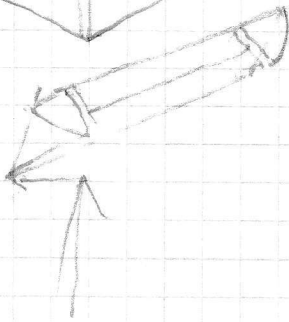
$$\begin{array}{r} 1125 \\ \underline{3} \\ 375 \end{array}$$



Computer simulation?
This is a framed structure

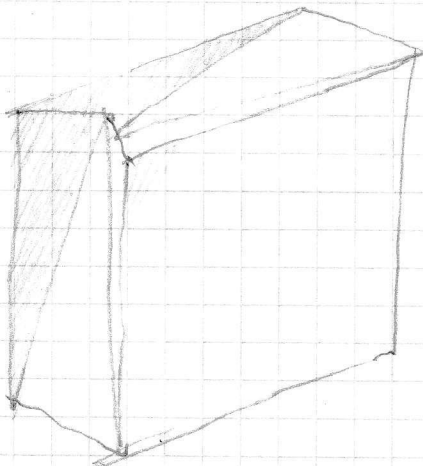
open one end only?

or



$$L^2 + L^2 = W^2$$

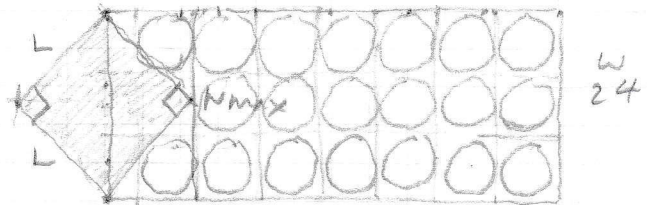
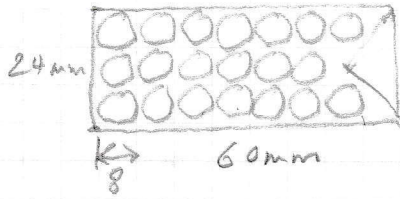
$$L = \frac{W}{\sqrt{2}}$$



I made the box using the current 92 mm x 92 mm x 15 mm box, and I think the opening is

- a) too small
- b) doesn't open very easily
- c) hasn't got a good catch

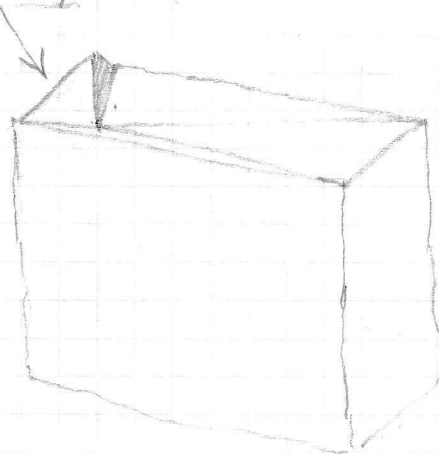
I'm thinking now of trying a box which is much nearer the usual cigarette box size, but slightly larger



The box today wasn't designed to snap shut/open (and didn't), I think the next one will be designed with ZL slightly greater than W_{max} , so that it (hopefully) will snap open and shut. That way it won't need a catch.

I might put a raised lip on it

Lip may need to be reinforced with scotch tape or cellulose tape

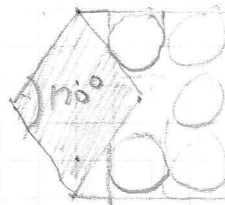


And I want NO GLUED EDGES in the complex zone

Does it need to be scored?

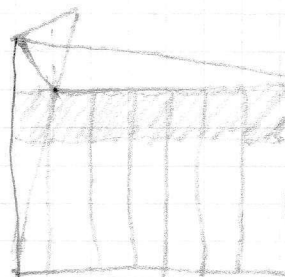
I think I may have to now have a bit from a 90° closure angle

because with a 24 mm wide box, there's 12 mm lost at the side and top. At the side it doesn't matter because there are 20 rather than 21 cigarettes.



But I could have a box that isn't square/rectangular

There's no particular reason why the box has to be exactly square.



Big Toby

There's an optimal design in there somewhere, and I haven't found it yet.

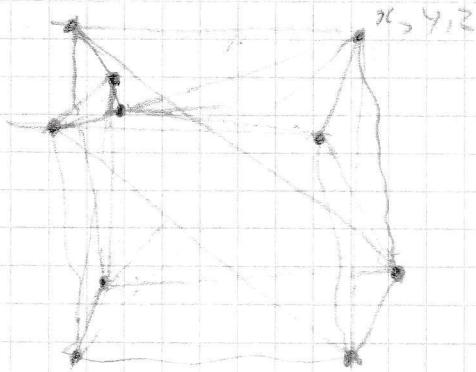
Write a computer programme to figure out the plans for these boxes.

This is architecture. 'Break the box!' The Cartesian Box

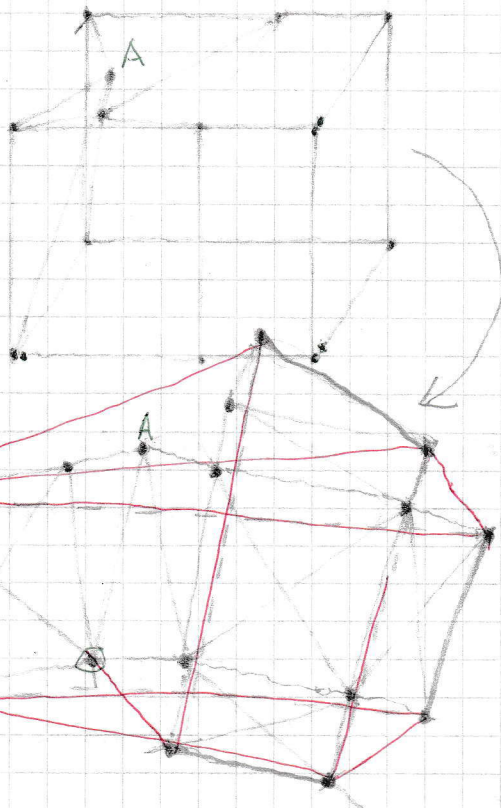
I think the job is to write a program to draw on the planes
of these cigarette packets.

27 April 2012

Mijnwegen



fix it in space
no nodes and lines
Unwrap to create net.

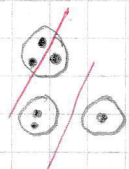
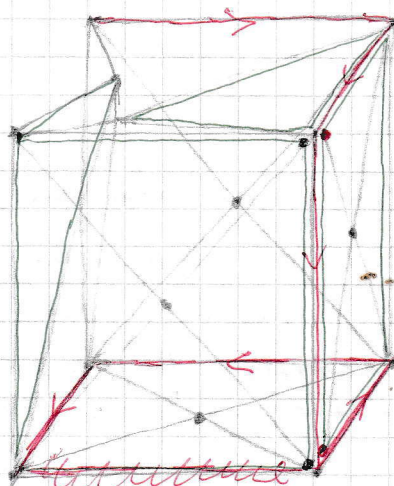
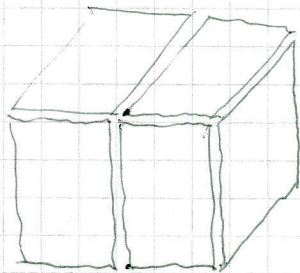


How do you get from 3D
to 2D?

Define a join, and then
push the join as far open as it
will go

Draw at slightly
different scales

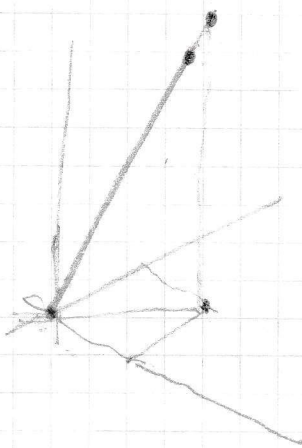
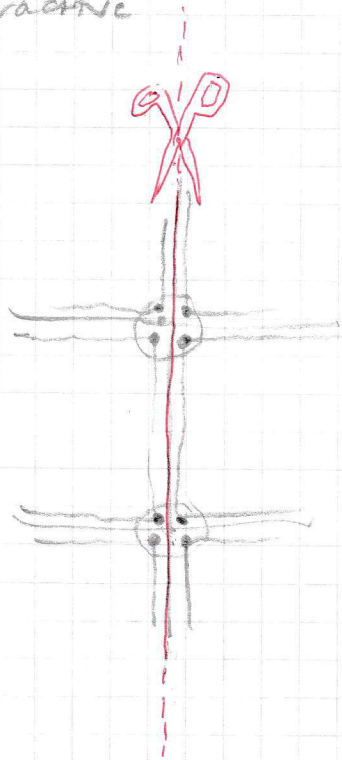
Print various sizes
variations in size/geometry



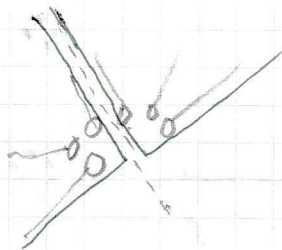
Whisky
milk
mustard
sausages
chips.

If most people repackage their cigarettes, the tobacco companies will no longer need to make boxes. They'll make bags of cigarettes. This will save them a lot of money. Foil bag.

Cigarette packets which are really rather dull at the moment will become very, very attractive.



Shorten the sticks at each node so that they pull apart. The node then separates into several nodes.



Tricky problem: how to cut up a framework.

When 11/12.7, the latest box snaps open. But it doesn't close very well, probably because the card isn't scored on the underside, and they don't bend properly. Also slightly mis-constructed angle.

It's important to be accurate. It will probably help a lot when I draw using a computer rather than a drawing board. Then it will just be necessary to cut and score accurately.

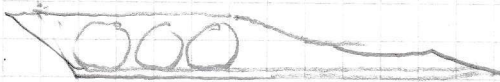
I've got more or less anything I need in the cell model to build a box, I think. When I haven't figured out how to cut it up and lay it flat or better, I think that once it's cut up, probably the top and bottom will lay it out flat. I haven't figured out how to cut it up though.

It should be possible to model the box behavior too (although that's not in the cell model, I don't think). I'd need to find when struts cross.

Least 18 mm wide box has a much better sized opening.

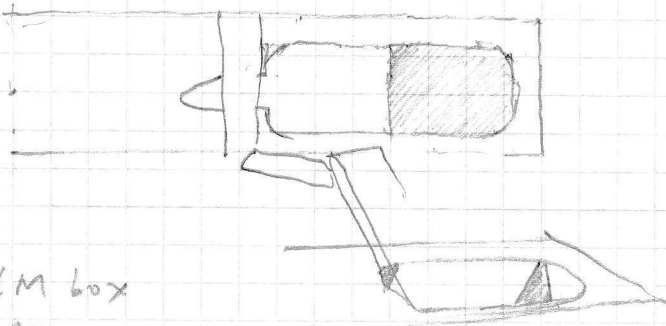
Cigarettes in packets are too closely packed, in my opinion. They're really wedged in there.

Wiseakiman said Pigeon's packets were criticized because they weren't very shiny, and they got bent or of shape. I can imagine that, because the pigeon packet is liable to get out of shape quite easily once a few cigarettes have been removed from it. The pack has no inherent rigidity.

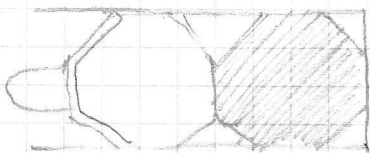
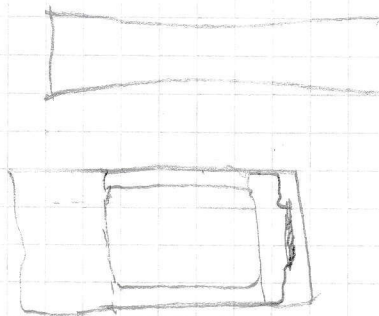


My box is mechanically quite strong. It's difficult to make it flip. In fact, it's not possible.

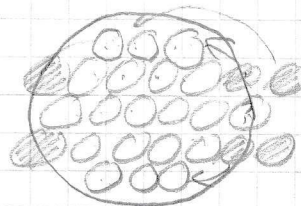
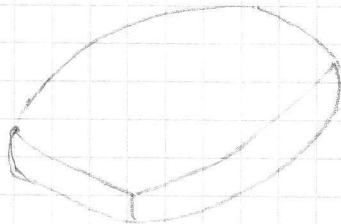
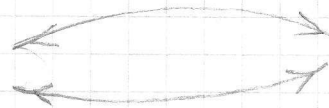
The flip-top box is stronger, but does it need to be that strong?



M & M box
Shake



By the way
M & M's will
be illegal
anyway



hexagonal 19 pack.

$$\text{band } 19 + 1$$

Tobacco Companies will sell cigarettes in hexagonal packets, covered in health logos after from a very small Pate Mall Blue.

They'll be completely

Rose (over-designing)

Quite right

Harley (silver-cigarette cases) (expensive)

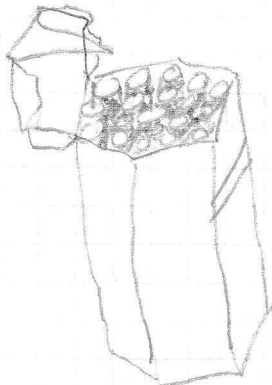
Renzhorn (Fear of the edge, and top margin)

Mitchman (Plyon packets got bent over & shape) (Plyon bags had 8 sty cases)

The way I see it, plain packing is a done deal. There isn't any Consmetron. Consmetron is a joke. Cigarettes are going to be shipped in their columns. These will be replaced with pictures of blackened pig's hooves and broken teeth and stuff. And every bag will be re-packaging. And they'll be re-packaging into Janet and John Made Babies packs (or whatever else they want)

And if anyone re-packages, then what's the point of the Tobacco Companies giving me a producer a silver box? None whatsoever, if it's plastered with pig hooves. So the Tobacco Companies will stop selling cigarettes in boxes. They'll sell them in bundles, maybe they'll do 20's, but most likely they'll do 19's. In a hexagonal bundle

And then what you'll want to do is show your hexagonal packets into a hexagonal Janet and John holder



The Tobacco Companies haven't yet started selling cigarettes in bundles of this sort, but I think they will.

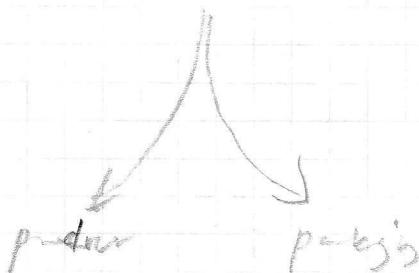
You'll show your hexagonal bundle of cigarettes into your prepared receptacle, much like you pour your peas and beans into a saucer.

The box (whatever it is) doesn't advertise anything. It's just Marlboro or a Camel or a B&W or a 55 or a 54 or a 53 etc.

[Handwritten signature]

After Janet and John have Made Babies, they get a Christ Child

Tobacco Companies



Thanks to new advertising standards, Tobacco Companies no longer can advertise their wares. This saves them a lot of money.

Thanks to plain packing, Tobacco Companies will no longer need to make packets for their producers, and so stop doing that. Which saves them a lot more money.

Marlboro packets smile at you, in a smug sort of way